

# EYECUITY

## Going Beyond Eye Care



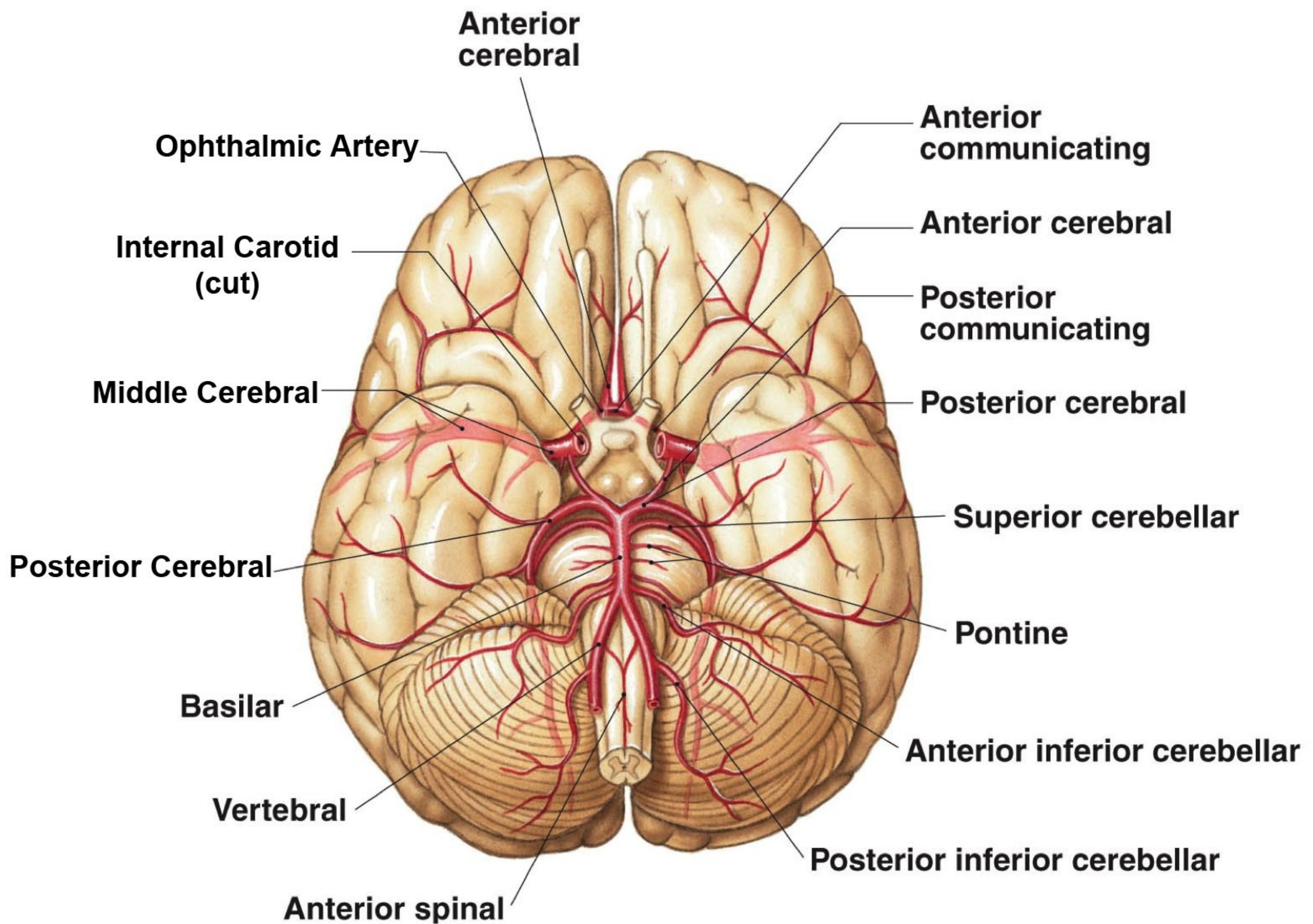
*The Center of Disease Control States That Stroke is the 3<sup>rd</sup> Leading Cause of Death behind Cardiovascular Disease and Cancer*



*The Journal of the American Medical Association States That 75% of all Strokes occur within the "Circle of Willis"*

### TRANSCRANIAL DOPPLER (TCD)

A Transcranial Doppler (TCD) is a 10 minute non-invasive, painless and extremely safe ultrasound looking at all of the major arteries and vessels of the Circle of Willis. This allows for the assessment of a patients risk of stroke/ocular stroke by measuring the Ophthalmic Artery and Cerebral Vascular blood flow.



### COMMON SYMPTOMS / CONDITIONS

- . Migraine Headaches
- . Visual Field Defect
- . History of TIA
- . Amaurosis Fugax
- . Transient Vision Loss
- . Retinal Ischemia
- . History of Stroke
- . Ocular Migraine
- . Visual Field Disturbance
- . Diabetic Retinopathy
- . Diplopia
- . Sudden Visual Loss
- . Ophthalmic Occlusion
- . Glaucoma
- . Hypertensive Retinopathy
- . Carotid Artery Disease

**Talk To Your Doctor About Being Screened Today With Our State Of The Art Transcranial Doppler Technology**